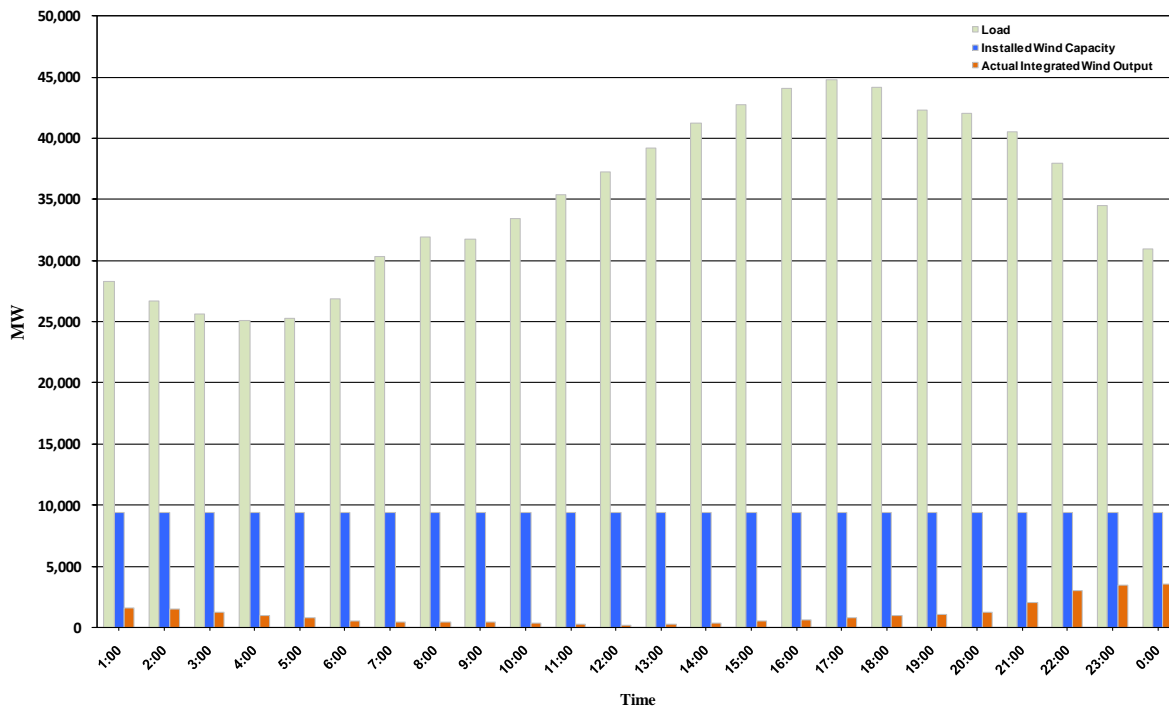




## ERCOT Grid Operations Wind Integration Report: 10/20/10

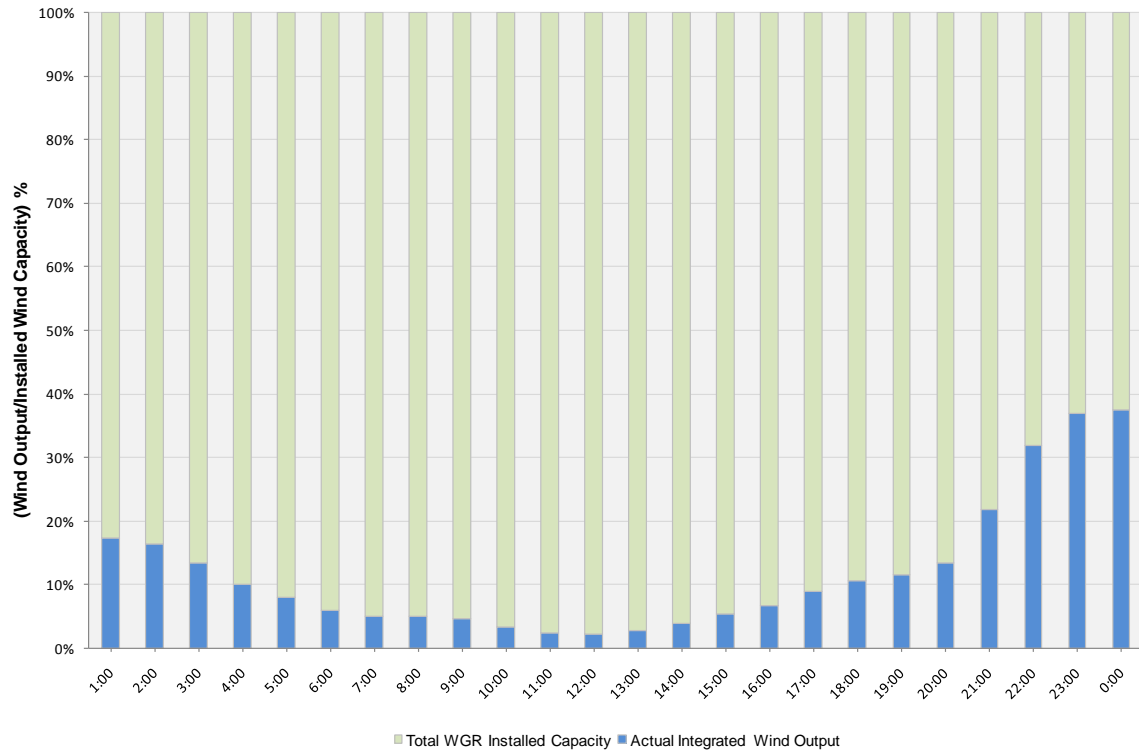
Peak Load	<b>44,786 MW</b>
Load Peak Hour	<b>17</b>
Wind Record 06/12/10	<b>7016 MW</b>
Max Wind value	<b>3648 MW</b>
Wind Peak Hour	<b>23:07:56</b>
Wind Integration %	<b>11.34</b>

Hourly Average Actual Load vs. Actual Wind Output  
10-20-2010

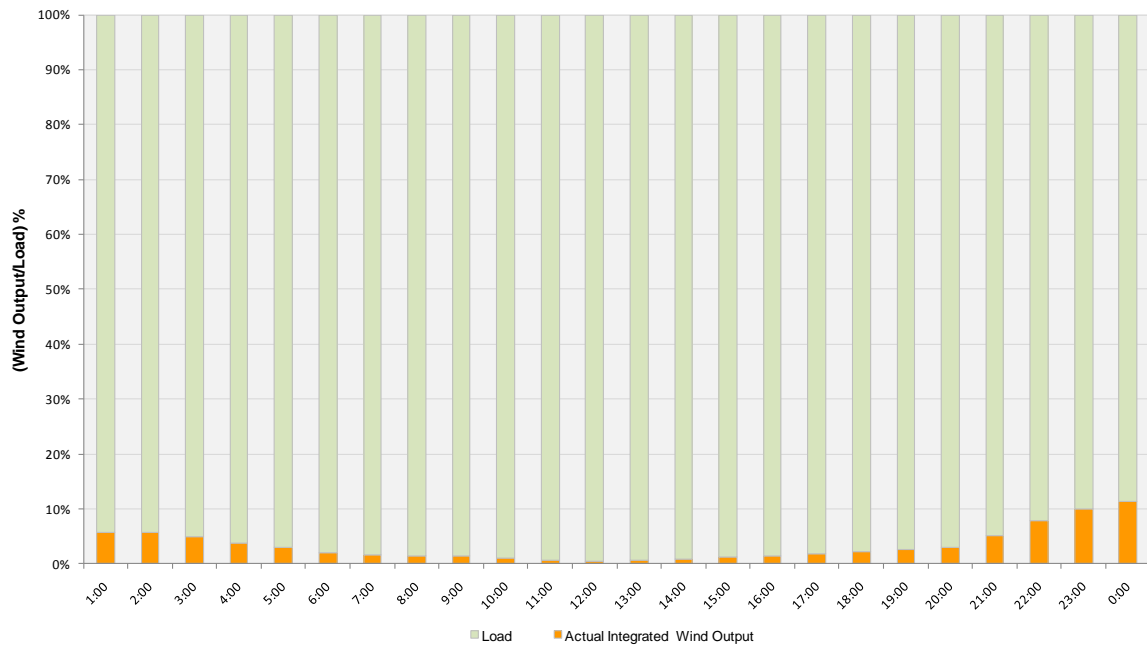




**Actual Wind Output as a Percentage of the Total Installed Wind Capacity**  
**10-20-2010**



**Actual Wind Output as a Percentage of the ERCOT Load**  
**10-20-2010**





**ERCOT Load vs. Actual Wind Output 10/13/10 - 10/20/10**

